

4-H Camp Kidwell

BALANCE SHEET

As of February 28, 2019

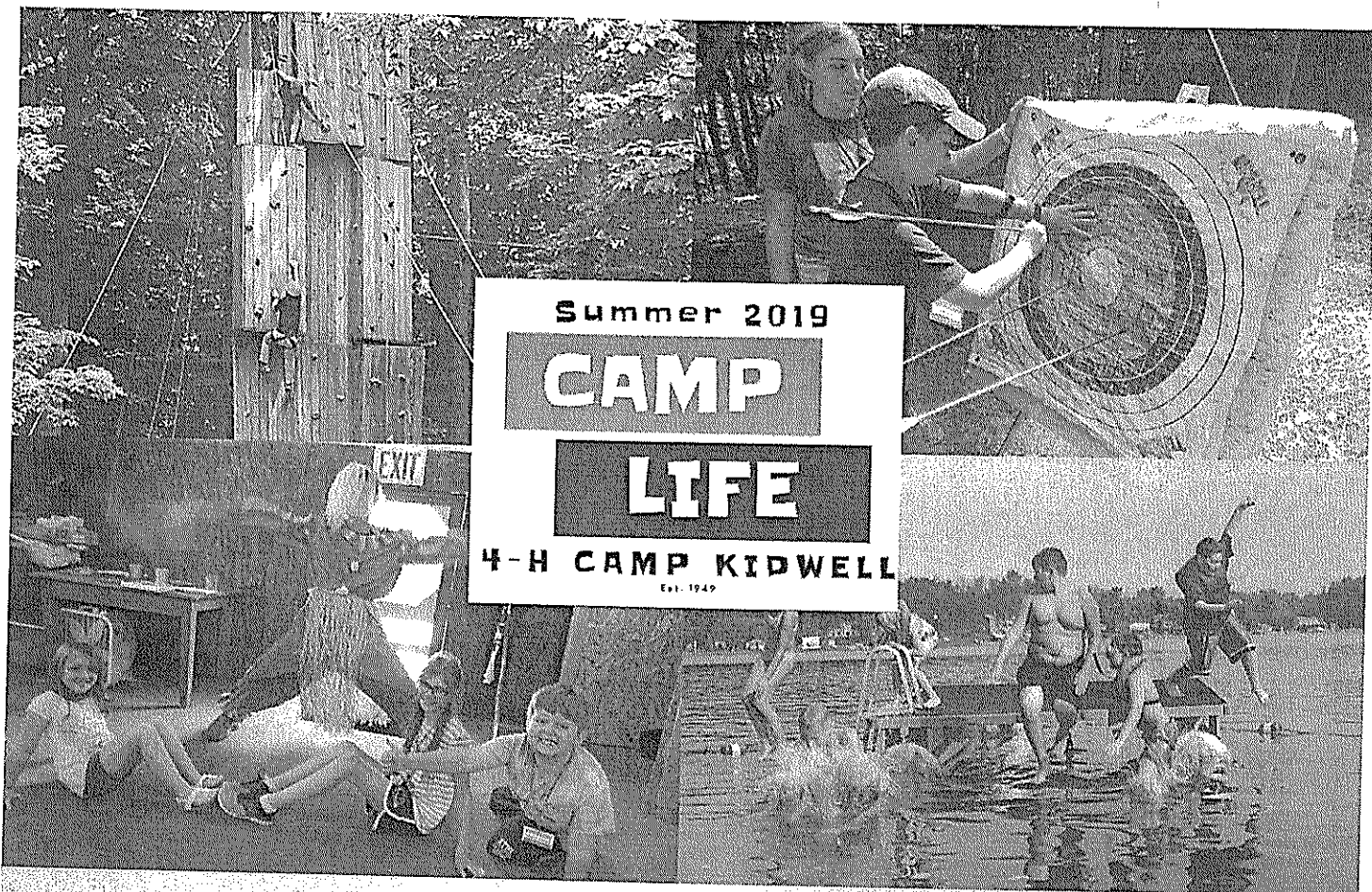
	TOTAL
ASSETS	
Current Assets	
Bank Accounts	
1122 Chemical Shoreline-Checking	8,715.64
1124 Chemical-savings	87,679.17
1125 Honor Credit Union - Checking Account	995.00
1126 mortgage reserve CD	0.00
1127 Honor Credit Union - Restricted Scholarships	58,536.21
1128 Honor Credit Union - Restricted Mortgage Reserve Account	35,240.14
Total Bank Accounts	\$191,166.16
Accounts Receivable	
1200 Accounts Receivable	1,352.50
Total Accounts Receivable	\$1,352.50
Other Current Assets	
1136 Misc Recievable	10,798.00
1141 Refundable Asset	429.00
1142 A/R Land Sale	0.00
1145 Prepaid Insurance	6,741.00
1146 Prepaid Expenses	0.00
1151 Due from Temporary Restr. Fund	0.00
1200.2 Pledges Receivable ¹	0.00
Payroll Corrections	0.00
Total Other Current Assets	\$17,968.00
Total Current Assets	\$210,486.66
Fixed Assets	
1170 Land-Original	6,000.00
1172 Land-Acquired	1,040,191.00
1173 Land Improvements	348,963.81
1174 Buildings	359,667.18
1174.2 Lodge Improvements	49,552.19
1174.3 Ropes Course	21,229.79
1174.4 Construction in Process	0.00
1174.5 Horses	6,250.00
1175 Furniture & Fixtures	40,490.32
1176 Equipment	60,410.42
1177 Program Equipment	4,295.00
1178 Accumulated Depreciation	-561,059.62
2170 Land	0.00
Total Fixed Assets	\$1,375,990.09
TOTAL ASSETS	\$1,586,476.75

	TOTAL
LIABILITIES AND EQUITY	
Liabilities	
Current Liabilities	
Accounts Payable	
Accounts Payable (A/P)	0.00
Total Accounts Payable	\$0.00
Other Current Liabilities	
1210 Payables	13,370.72
1220 Accrued Liabilities	0.00
1230 Federal Payroll Taxes	0.00
1240 State Payroll Taxes	0.00
1250 Current Portion L/T	12,305.15
1255 Accrued Interest	1,021.35
1270 Rental Deposits	2,500.00
2140 Due to Unrestricted Fund	0.00
Payroll Liabilities	
Federal Taxes (941/944)	1,135.06
IL Income Tax	3.68
MI Income Tax	261.94
MI Local Tax	2.70
MI Unemployment Tax	-302.75
T-shirt/Sweatshirt	58.00
WI Income Tax	3.06
Total Payroll Liabilities	1,161.69
Total Other Current Liabilities	\$30,358.91
Total Current Liabilities	\$30,358.91
Long-Term Liabilities	
1260 Long Term Debt	311,861.71
1265 Note payable- tractor	18,228.01
Total Long-Term Liabilities	\$330,089.72
Total Liabilities	\$360,448.63
Equity	
1300 Net Assets	-952,489.61
3000 Opening Bal Equity	2,188,426.93
Net Income	-9,909.20
Total Equity	\$1,226,028.12
TOTAL LIABILITIES AND EQUITY	\$1,586,476.75

ALLEGAN COUNTY 4-H CLUBS, INC
Monthly Financial Report
 March Board Meeting 2019 - 3/18/2019

	FEBRUARY	JAN.-FEB.	YTD.	19 BUDGET
1400.1 Designated to Camperships				\$8,000.00
1400.18 personal memorial				
1400.2 designated to mortgage				
1400.3 General Contributions	50.00	50.00	50.00	\$10,000.00
1410.2 Golf Outing	200.00	200.00	200.00	\$13,000.00
1410.3 Food Booth				\$25,000.00
1410.7 Halloween Festival				
1410.71 Halloween Hustle				
1410.8 Festival of Trees		1,430.00	1,430.00	\$52,000.00
1410.81 Festival of Trees Tax		19.80	19.80	\$1,000.00
1410.9 Community breakfasts				
1411.1 spring flower sales				\$1,750.00
1411.2 Memorial Garden		250.00	250.00	\$250.00
1411.32 Year End Appeal				\$1,500.00
1411.52 Interest Income	16.38	38.18	38.18	\$500.00
1411.53 Land Rent				\$5,200.00
1412 Miscellaneous Income				\$250.00
1413 Horse Program Income				
1416.1 Resident Camp	2,175.00	2,175.00	9,378.00	\$85,000.00
1416.2 Day Camp	560.00	560.00	1,107.00	\$14,000.00
1416.3 Camp Store Income	25.00	92.00	211.00	\$12,000.00
1416.8 Staff Training and Resources				
1417 Winter Camp	7,590.00	8,370.50	9,543.00	\$12,500.00
1421.1 Facilities Rental	1,555.00	2,955.00	4,355.00	\$64,000.00
1421.2 Program/Ropes Income	300.00	300.00	3,600.00	\$55,000.00
1421.6 Rental/Program Deposit Income	600.00	600.00	1,100.00	\$2,000.00
Total Income	\$13,071.38	\$17,040.48	\$31,281.98	\$362,950.00
1500.18 Personal Memorials Expense				
1510.2 Golf Outing Expense				\$250.00
1510.3 Food Booth Expense		3.00	3.00	\$12,000.00
1510.31 Food Booth Council Share				\$750.00
1510.32 Food Booth Maintenance & Repair				\$1,000.00
1510.7 Halloween Festival Expense				
1510.71 Halloween Hustle Expense				
1510.8 Festival Of Trees Expense	1,717.25	3,972.85	3,972.85	\$11,500.00
1510.9 Community Breakfast Expense				
1511.1 Spring Flower Sale Expense				\$1,000.00
1511.2 Memorial Garden Expense				\$250.00
1511.32 Year End Appeal Expense				
1511.52 Interest Expenses				
1512 Miscellaneous Expense		6.74	6.74	\$250.00
1513 Horse Program Expense	244.53	244.53	244.53	\$5,500.00
1516.11 Camper Refunds				\$500.00
1516.14 Camp Store Expense	96.73	94.07	94.07	\$9,500.00
1516.15 Staff Wages	0.02	0.02	0.02	\$40,000.00
1516.16 Camper Discounts				\$10,000.00

	FEBRUARY	JAN.-FEB.	YTD	19 BUDGET
1516.17 Online Registration Fee	88.00	120.00	120.00	\$2,750.00
4-H Camper participation Fees				\$3,000.00
1516.3 Food Expense				\$17,000.00
1516.5 Consumable Program Supplies	25.42	25.42	25.42	\$1,500.00
1516.6 Nurses Station Supplies	72.56	72.56	72.56	\$500.00
1516.8 Staff Training & Resources				\$4,750.00
1517 Winter Camp Expense	826.51	1,242.01	1,242.01	\$1,500.00
1517.1 Winter Camp Staff Wages				\$2,500.00
1521.2 Program Expense	298.99	298.99	298.99	\$1,500.00
1521.3 Program Food Expense	163.67	322.81	322.81	\$3,000.00
1521.4 Program Staff Wages	1,050.00	1,050.00	2,599.95	\$11,500.00
1521.6 Rental/Program Deposit Return				\$2,500.00
1521.7 Rope Course Maintenance				\$2,500.00
1610 Wages-Director	3,806.01	5,074.68	6,343.35	\$31,000.00
1611 Wages-Asst. Director				\$30,000.00
1612 Wages-Office Staff	672.00	997.50	1,286.25	\$8,500.00
1613 Casual Labor	144.00	776.00	776.00	\$7,500.00
1614 Wages-Maintenance	630.00	840.00	1,102.50	\$9,000.00
1615 Advertising and Marketing	1,408.06	1,633.06	1,633.06	\$6,000.00
1619 Credit Card Fees	67.29	236.05	236.05	\$5,500.00
1620 Bank Service Charges				\$25.00
1621 Incentive Fees		125.00	125.00	\$1,300.00
1633 Dues & Memberships				\$1,750.00
1642 Interest Expense				-
1645 Insurance-Bond				\$175.00
1646 Insurance-general liability-prop				\$14,500.00
1647 Insurance-Workers Comp				\$3,500.00
1651 Kitchen Supplies Expense				\$750.00
1655 Capital Expenditures	256.73	737.65	994.38	\$8,100.00
1656 Repair & Maintenance-Equip/Tool				\$2,000.00
1656.1 Maintenance & Repair-Lodge				\$1,500.00
1656.2 Maintenance & Repair	220.44	581.78	722.51	\$8,500.00
1656.3 Maintenance & Repair-New House				\$500.00
1658 Travel and Meals-Staff	169.94	169.94	169.94	\$2,000.00
1659 Lawn Care				\$1,500.00
1660 Snow Removal	483.56	855.26	915.61	\$1,250.00
1661 Office Supplies	540.46	1,566.74	1,867.01	\$8,250.00
1661.1 Office Equipment				\$500.00
1665 Postage		108.47	114.45	\$500.00
1669 Cleaning/Paper Products	12.28	12.28	12.28	\$1,750.00
1670 Legal & Professional	975.00	975.00	975.00	\$2,500.00
1671 Utilities	395.85	785.85	1,175.85	\$7,100.00
1672 Phone & Internet	172.04	346.26	346.26	\$2,350.00
1673 Electric	1,235.45	2,291.11	3,417.28	\$9,750.00
1674 Yearly Mortgage payment				\$28,514.00
1686 Taxes-Payroll	471.10	609.13	866.95	\$9,000.00
1687 Taxes, Licenses & Other	36.00	774.92	774.92	\$2,250.00
Total Expenses	\$16,279.89	\$26,949.68	\$32,857.60	\$364,314.00
Totals	-\$3,208.51	-\$9,909.20	-\$1,575.62	-\$1,364.00

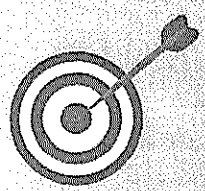
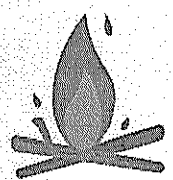


Summer 2019
CAMP
LIFE
 4-H CAMP KIDWELL
Est. 1949

Swimming
 Horseback riding
 Ropes/climbing
 Crafts
 Canoe/kayaking
 Drama/acting
 Water Trampoline
 Campfire
 Archery

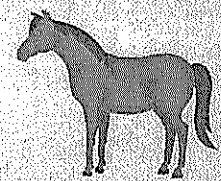
**WHAT DOES
 4-H CAMP KIDWELL
 OFFER?**

Independance
 Friendship
 Memories
 Cooperation Skills
 Self-confidence
 Life skills
 communication skills
 responsibility
 Exploration



Overnight Camps
 Day Camps
 Ages 4-16

Sunday - Friday Sessions
 Financial Aide available



www.campkidwell.org

(269)521-3559 * (866)324-2797 * campkidwell@btc-bci.com

2019 Camp Session Schedule & Details

Dates	Session	Description
July 7-12	Surf'n Safari Overnight	7-14 year olds * \$385 non-4-H Member/\$335 4-H Members – Fun on the lake, and in the water is always a highlight of the summer! This week we will spend lots of time exploring ways to get wet and have a ball doing it. Volleyball at the lake, our giant slip n' slide, whipped cream baseball, building rafts and many other adventures at the waterfront and under the hose!!! Don't forget the opportunity to jump on the water trampoline, go fishing, take a ride on the pontoon boat, go canoeing and run through the sprinkler. All this and enjoy traditional camp activities as well!
July 14-19	Shipwrecked	8-16 year olds * \$385 non-4-H Member/\$335 4-H Members – The USS KIDWELL has crashed on Kidwell Island, and we have to figure out how to survive!!! This week will be a fun experience learning to build campfires, create nature shelters, exploring the forest, identify plants and animals and learn out to "live of the land." Don't forget, everyone will have a chance to tent camp on Kidwell Island (weather permitting) as well as enjoy all our traditional camp activities. Pack your bags, but be sure to bring your swimsuit and life buoy, coming ashore can be a little rough and wet!
July 28-Aug. 2	Mad Science	7-14 year olds * \$385 non-4-H Member/\$335 4-H Members – Mad Science 2019 is will feature a guest Mad Scientist, Dr. Groot. He will have many experiments and exhibitions for you to take part in. We might create volcanoes, make mud masks, cook with the sun or any variety of cool activities! Mad Science 2019 is your chance to put on your lab coat and goggles and dig right in. We plan to create a few explosions, get slimy and enjoy the wonders of being a scientist! You never know the experiments we will have planned or the traditional camp activity you will have a chance to take part in!
August 4-9	Wet and Wild	8-16 year olds * \$385 non-4-H Member/\$335 4-H Members – Let's get WET and Wild. Water balloon fights, swimming, canoeing, kayaking water rockets and many other water based activities will be our focus. Not to mention time on the water front playing in the same or even sitting on the dock enjoy the sun. We look forward to jumping into getting WET & WILD with you and your friends!!! All our traditional camp activities will be available to try as well!

Specialty Overnight Camps

Dates	Session	Description
July 7-12	Race Kidwell	7-14 year olds * \$440 non-4-H Member/\$390 4-H Members – We're looking forward to challenging you and your partner to a wide variety of adventures to see who wins Race Kidwell! Which team will find the lost treasure fastest? Who is going to quickly answer the riddles put the puzzle together? Can you run fast while balancing an egg on a spoon? We have a whole load of challenges to test your perseverance, stamina and knowledge. Will you and your team be the winner of the first ever Race Kidwell? We'll even sneak in a few traditional camp activities.
July 14-19	Adventure Island	8-16 year olds * \$440 non-4-H Member/\$390 4-H Members – We can't wait to explore Kidwell Island with you! This excursion will include planning for and going on a camping trip on Kidwell Island, exploring the island and gaining some basic wilderness survival skills. As you prepare for your trip you will plan your meals, learn how to cook over a fire, now to pick a great camp site and design/set up a shelter. Your Island Adventure will be one you never forget! When you're not exploring, traditional camp activities will be available as well.
July 28-Aug. 2	Creating S.T.E.A.M.	7-14 year olds * \$440 non-4-H Member/\$390 4-H Members – Science...Technology...Engineering...Art...Math...We're going to explore each of these different areas. You might create a light up flower, paint with magnets, design catapults, or see how much weight spaghetti can hold. Campers will test the limits to see what they can create and open their minds through multiple fun and exciting activities each day. Traditional camp activities will also be available through the week.
August 4-9	Thrills and Chills Ropes	9-16 year olds * \$440 non-4-H Member/\$390 4-H Members – We will be looking to give you "THRILLS" as you jump off the power pole and "CHILLS" as you zoom down the zipline. Through the week campers will have the chance to progress through all of our adventure activities. We'll try some ground initiatives, climb the climbing wall, hi the high ropes course and many other activities. There will be lots of "THRILLS and CHILLS" as well as many opportunities to learn some teambuilding and leadership skills as you test your personal limits and make great friends along the way! We'll find time for you to try a few traditional camp activities if you choose.
July 7-12	7-14 yo	Horse Crazy OC - \$440 non-4-H Member/\$390 4-H Members – We are looking forward to getting you in the saddle and learning what it means to be a cowgirl or cowboy. Emma, Keke, Dream, Wildfire, Taz, Tara, Lita and a few new critters can't wait to have you brush them, learn how to saddle, take you on trail rides, play some games and have a blast with you! You will have the chance to learn how to safely interact with, care for, groom, tack, and ride our horses. There will saddle time in the arena, on the trail and playing games. Our horses enjoy being loved on and spoiled and are looking forward to their favorite part of the week when you will get to "paint the ponies" and then give them a bath! You will spend most of your day with the horses but will have a chance to try a few traditional camp activities as well. Please pick the Horse Crazy session which fits your age group and schedule.
July 14-19	8-15 yo	
July 28-Aug. 2	7-14 yo	
August 4-9	8-16 yo	
July 7-12	13-16 yo	Kidwell Leaders OC - \$440 non-4-H Member/\$390 4-H Members - Do you look forward to being a camp counselor some day? Kidwell Leaders is your chance to get a taste of what working at camp looks like and gain some leadership skills, while still getting to enjoy traditional camp activities. Try your hand at helping the CIT's in the kitchen, be part of a session and help an instructor make their activity special for the campers. Counselors will appreciate your help in creating a positive and fun atmosphere in your cabin. We will be sure you can enjoy regular camp activities as well as part of a cabin group and participate in a few camper sessions.
July 14-19	13-16 yo	
July 28-Aug. 2	13-16 yo	
August 4-9	13-16 yo	

Senior Day Camps

Dates	Session	Description
7/8-7/12	Surf n Safari	7-14 year olds * \$285 non-4-H Member/\$235 4-H Members – Fun on the lake, and in the water is always a highlight of the summer! This week we will spend lots of time exploring ways to get wet and have a ball doing it. Volleyball at the lake, a giant slip n' slide, whipped cream baseball, building rafts and many other waterfront adventures or under the hose!!!! Don't forget the opportunity to jump on the water trampoline, go fishing, take a pontoon ride, go canoeing and run through the sprinkler. All this and enjoy traditional camp activities as well! Senior Day Campers participate in the same schedule and activities as the traditional overnight camp that is taking place the same week.
7/15-7/19	Shipwrecked	8-16 year olds * \$285 non-4-H Member/\$235 4-H Members – The USS KIDWELL has run aground on Kidwell Island. We have to figure out how to survive!!! This week will be a fun experience learning to build campfires, create nature shelters, exploring the forest, identify plants and animals and learn out to "live of the land." Don't forget, everyone will have a chance to tent camp on Kidwell Island (weather permitting) as well as enjoy all our traditional camp activities. Pack your bags but be sure to bring your swimsuit and life jacket, coming ashore can be a little rough and wet! Senior Day Campers participate in the same schedule and activities as the traditional overnight camp that is taking place the same week.
7/29-8/2	Mad Science	7-14 year olds * \$285 non-4-H Member/\$235 4-H Members – Mad Science 2019 is will feature a guest Mad Scientist, Dr. Groot. He will have many experiments and exhibitions for you to take part in. We might create volcanoes, make mud masks, cook with the sun or any variety of cool activities! Mad Science 2019 is your chance to put on your lab coat and goggles and dig right in. We plan to create a few explosions, get slimy and enjoy the wonders of being a scientist! You never know the experiments we will have planned or the traditional camp activity you will have a chance to take part in! Senior Day Campers participate in the same schedule and activities as the traditional overnight camp that is taking place the same week.
8/5-8/9	Wet and Wild	8-16 year olds * \$285 non-4-H Member/\$235 4-H Members – Let's get WET and Wild. Water balloon fights, swimming, canoeing, kayaking water rockets and many other water based activities will be our focus. Not to mention time on the water front playing in the same or even sitting on the dock enjoy the sun. We look forward to jumping into getting WET & WILD with you and your friends!!! All our traditional camp activities will be available to try as well! Senior Day Campers participate in the same schedule and activities as the traditional overnight camp that is taking place the same week.

Junior Day Camps

Dates	Session	Description
7/8-7/12	Under the Sea	4-7- years old * \$285 non-4-H Member/\$235 4-H Members – Junior Day Campers have the chance to experience the magic of camp, try new activities, make friends, develop new skills and spend time at home each evening. There is no doubt after spending a week with our amazing staff and the other campers they will be begging to stay as overnight campers, or at least pass out in the back seat of the car on the way home. Our junior day campers enjoy each day in their own special group, which goes everywhere and does everything together. Each day campers have time with the horses and at the waterfront (weather permitting). They also can create crafts, explore nature, participate in acting games, experience our games cabin as well as enjoy a variety of other activities based on the weekly theme. The theme for junior day camp is similar to the resident camp taking place the same week, with its own unique twists and adventures. Junior day camp staff to camper ratio is 1:6 with a minimum of 2 staff members. Junior day campers do occasionally see and interact with resident campers, mostly at meal times or as they navigate throughout camp.
7/15-7/19	First Mates	
7/29-8/2	Science Explorers	
8/5-8/9	Lil' Water Bugs	

Specialty Day Camps

Dates	Session	Description
8/12 - 8/16	Horse Crazy	7-16- years old * \$310 non-4-H Member/\$260 4-H Members – We are looking forward to getting you in the saddle and learning what it means to be a cowgirl or cowboy. Emma, Keke, Dream, Wildfire, Taz, Tara, Lita and a few new critters can't wait to have you brush them, learn how to saddle, take you on trail rides, play some games and have a blast with you! You will have the chance to learn how to safely interact with, care for, groom, tack, and ride our horses. There will saddle time in the arena, on the trail and playing games. Our horses enjoy being loved on and spoiled and are looking forward to their favorite part of the week when you will get to "paint the ponies" and then give them a bath! You will spend most of your day with the horses but will have a chance to try a few traditional camp activities as well. Please pick the Horse Crazy session which fits your age group and schedule.
8/12 - 8/16	Campers Choice	9-16- years old * \$310 non-4-H Member/\$260 4-H Members – This week is all about our campers and what they like to do. We will reach out to you before camp and ask you to give us a list of activities you would like to do while you are here at camp. I could be the zipline, giant ladder, riding horses, doing crafts, drama games, swimming, kayaking, campfire, it is up to the campers. With a group of campers we will have to pick the best of the best, but everyone will get a chance to do many of their favorite camp activities throughout this week! Campers choose the activities this week!!!

2019 4-H CAMP KIDWELL REGISTRATION FORM

Male / Female

Camper First Name	Camper Middle Initial	Camper Last Name
Birthday(mm/dd/yyyy)		Age at the start of camp session
Home Address		
Home Phone	Do you have a Cabinmate request? (We can only honor one cabinmate request)	

Is the camper a 4-H Member or Is an immediate family member a retired or active duty military member? 4-H Club or Family Member name and branch of service

Camp Reservation Information - Please check the week(s) you plan to attend.

Day Camp Sessions - \$275/\$225 4-H Members

- July 8-12 Under the Sea - Junior - Ages 4-7
- July 8-12 Surf'n Safari - Senior - Ages 7-12
- July 15-19 First Matey - Junior - Ages 4-7
- July 15-19 Shipwrecked - Senior - Ages 8-16
- July 29-Aug 2 Science Explorers - Junior - Ages 4-7
- July 29-Aug-2 Mad Science - Senior - Ages 7-12
- August 5-9 Lil' Water Bugs - Junior - Ages 4-7
- August 5-9 Wet & Wild - Senior - Ages 8-16

Specialty Day Camp Sessions - \$310/\$260 4-H Members

- Aug 12-16 Horse Crazy - Ages 7-16
- Aug 12-16 Campers Choice - Ages 9-16

Overnight Camp Sessions - \$385/\$335 4-H Members

- July 7-12 Surf'n Safari - Ages 7-12
- July 14-19 Shipwrecked - Ages 8-16
- July 28-Aug 2 Mad Science - Ages 7-12
- August 4-9 Wet & Wild - Ages 8-16

Specialty Overnight Camp Sessions - \$440/\$390 4-H Members

- July 7-12 Creating S.T.E.A.M. - Ages 8-14
- July 7-12 Horse Crazy - Blue - Ages 7-12
- July 7-12 Kidwell Leaders - Blue - Ages 13-16
- July 14-19 Challenge Accepted! Ropes - Ages 9-16
- July 14-19 Horse Crazy - Yellow - Ages 8-16
- July 14-19 Kidwell Leaders -Yellow - Ages 13-16
- July 28-Aug 2 Adventure Island - Ages 8-14
- July 28-Aug 2 Horse Crazy - Green - Ages 7-12
- July 28-Aug 2 Kidwell Leaders - Green - Ages 13-16
- August 4-9 The Amazing Race - Ages 10-16
- August 4-9 Horse Crazy - Purple - Ages 8-16
- August 4-9 Kidwell Leaders -Purple - Ages 13-16

Financial Info

Fees

Tuition \$ _____

Camp Store -- Tuition includes \$5 credit parent contribution limited to \$15 \$ _____

Discounts -- camper eligible to up to \$75 discounts

Early Reg. Discount - \$25 off, if registered by 3/15 \$ _____

Sibling Discount - \$25 off if multiple siblings, 1/family \$ _____

Additional Week Discount - \$25 off \$ _____

Coupon Code - _____ Limit 1 \$ _____

4-H Member or Military Discount - \$50 \$ _____

Like Cash Fund -- these funds hold no cash value

4-H Incentives \$ _____

4-H Camp Kidwell Scholarship \$ _____

Gift Certificate \$ _____

Fundraiser \$ _____

Total \$ _____

PAYMENT INFO

Please make checks payable to 4-H Camp Kidwell and mail registration and payment to:
4-H Camp Kidwell, 39000 1st Ave, Bloomingtondale, MI 49026

Payment Amount: _____

Payment Type

Cash

Check/Money Order # _____

Credit Card

Card Number: _____

Exp. Date: _____

Security Code: _____

Card Holder's Name: _____

A non-refundable \$100 deposit is required with the return of this registration form. Balances are due two weeks prior to the week your child will be attending. The obligation of the camp for its counselors, employees and general expenses are fixed for the summer and the absence of a camper does not lessen the operation expenses. Therefore, no refund or deductions will be made for campers who arrive late or leave early. When a camper must leave camp upon the direction of 4-H Camp Kidwell's physician or the family physician, the parent and the camp will share the loss of tuition equally. 4-H Camp Kidwell reserves the right to dismiss, without refund, any camper whose behavior is disruptive to the operation of camp. Campers who receive any type of scholarship are not eligible for discounts.

Parent/Guardian Consent and Payment Agreement: By signing below, I give permission for my child to attend 4-H Camp Kidwell. I agree to pay, in full, the cost for my child to attend 4-H Camp Kidwell. I understand that balances are due two weeks prior to my child attending camp.

Parent Signature: _____ Date: _____

Financial Aid Application Information - Summer 2019

For:

Financial Aid Application 2019

Financial Aid is distributed based on the financial need of each family.

As you complete this form, Please list **EVERYONE** in your family/household and **ALL** income they contribute to your family.

We will verify all income. We will request that you send us proof, in a follow up email. The best way to do this is a copy of your most recent tax return. Pay check stubs and letters/legal documents will also be accepted.

Family Income Information

What is your total family annual income?

Please list ALL family member (first and last name) and ALL of their monthly income.

Please label where the income comes from(work, child support, SSI, etc). If a member has multiple income sources, please list **EVER** person living in your household and the monthly income they provide to your family.

How much tuition are you requesting?

Funds are limited, and we ask that families provide as much as they can so we can help as many families and children as possible.

25% 50% 75%

Need Explanation

Why is a financial aid needed for your family?

Child Information

Please list the name and age of Child #1 who wants to attend camp.

Which type of camp does Child #1 want to attend?

Junior or Senior Day Camp Specialty Day Camp Traditional Overnight Camp Specialty Overnight Camp

Please list the name and age of Child #2 who wants to attend camp

For:

Which type of camp does Child #2 want to attend?

- Junior or Senior Day Camp Specialty Day Camp Traditional Overnight Camp Specialty Overnight Camp

Please list the name and age of Child #3 who wants to attend camp.

Which type of camp does Child #3 want to attend?

- Junior or Senior Day Camp Specialty Day Camp Traditional Overnight Camp Specialty Overnight Camp

Please list the name and age of Child #4 who wants to attend camp.

Which type of camp does Child #4 want to attend?

- Junior or Senior Day Camp Specialty Day Camp Traditional Overnight Camp Specialty Overnight Camp

Please list additional children.

Include name, age and the type of camp they would like to attend.

Please share any additional information you feel we should be aware of.

By 'signing' below I certify that all information on this application is complete, accurate and true. I understand 4-H Camp Kidwell receives funding from various sources based on the information I provide. I understand 4-H Camp Kidwell officials may verify the information I provide. I understand that if I purposely give false information, my child may lose scholarship assistance and I may be prosecuted. I have been given all the time I need to read and complete this form.

Signature _____ Date _____

4-H Camp Kidwell

2019

Scholarship Eligibility Qualifications

		Number of Resident in Household					
		2	3	4	5	6	7+
Household Income Total	0-24,000	75%	75%	75%	75%	75%	75%
	24,001-29,000	50%	75%	75%	75%	75%	75%
	29,001-34,000	50%	50%	75%	75%	75%	75%
	34,001-39,000	25%	50%	50%	75%	75%	75%
	39,001-44,000	25%	25%	50%	50%	75%	75%
	44,001-49,000	0%	25%	25%	50%	50%	75%
	49,001-54,000	0%	0%	25%	25%	50%	50%
	54,001-59,000	0%	0%	0%	25%	25%	50%
	59,001-64,000	0%	0%	0%	0%	25%	25%
	64,001-69,000	0%	0%	0%	0%	0%	25%

**4-H Camp Kidwell
Directors Report
March 2019**

Financial Info

- See Attached Monthly Reports

Facilities Report

- **Facilities/Maintenance Committee** – I am looking forward to developing a maintenance and improvement program.

Directors Report

- **Camp Life Summer 2019** – Registration is off to a great start. We have 92 kids registered right now, compared to 68 last year .
- **CMH Relationship** – We have a meeting with folks at CMH to discuss plans for this summer.
- **Staff 2019** – I have received about 30 application so far and will be working on setting up interviews for next week. I have had a good start on male staff, which is great. I will need your support and help with getting a few older staff members to fill the AD, head counselor roles, as well as the specialty positions; life guards, horse staff, etc.
- **Matching Grant** – I spoke with KD Lake and she is working to get the grant set up. She only had two grants available this year and they were used already, but someone another agent has told her we can use his. She is working with him to get it set up and will let me know as soon as it is ready to go and we can then get out solicitation. We need to raise \$2500 to get the full match.
- **Insurance** – I spoke with our agent and he has given me a rough number for renew of \$12,250. This is compared to \$11,228 in 2018. They are still working to see if they can get it down a little, but this is a close estimate. We will have an additional \$650-ish in auto coverage, but we have really only seen about a \$1000 increase in the three years of having the policy with them. If renew with them this rate would be locked in for 3 years.
- **2019 Wish List Items**
 - Water adventure – I have collected a few ideas and have a contact to help us when we are ready to purchase. If we purchase before the end of march there are a couple of good sales going on. Not sure if we want to do that or not, but just wanted to let you know.
 - Generator – Just need to buy one – Will be getting an 8500kw unit that should work well for the lodge.
 - Plates and Bowls – I have these picked out, I just need to order
 - New Camp Store Space – Horace and I have a plan laid out and as soon as the weather is ready to cooperate, we will get building.
 - Electrical Upgrade – I haven't been able to connect with our contact yet. I will continue to do so
- **4-H Council Auction** – Camp will have a basket for the auction. We will be doing a \$100 gift certificate and a bunch of Kids stuff.
- **Advertising and Marketing Packet for April** – I will have a packet of images, flyers and such for you by the end of the month. Please share them on your social media sites as well as print and place at places you frequent.
- **Rentals 2019** – Agreements for 2019 have been sent out and our weekend schedule is almost completely full from May 15 through October 1. We also have camp being used every day from June 7 through August 16. It should be a very, very busy summer!
- **Upcoming Events** - Please be thinking of sponsors and if you can help with setup, running and clean-up of these events!
 - **Summer Staff Application** – Now open
 - **Spring Clean-up** – April 20th
 - **Golf Outing** – May 18th
 - **2019 Respites**
 - March 15-17, April 12-14, May 10-12
 - **Summer Camp 2019 – June 16-August 16**
- **As time allows I hope to work on these and/or could use your help with**
 - **Contact information/system** – This year has gone and finding time to review/access and update our contact system has been hard. This is important though, and I don't want to let it fall to the wayside. I think a good organized system can and will really help us be more organized and proficient. Festival of Trees is coming and then the Holidays, but I would like to set a time to work on this.
 - **Fundraising and Engagement** – It was mentioned at one of our past meeting that the use of an online system for fundraising and Engagement may be a way to help work smarter, not harder. I am not sure if this is something we want to pursue, but I would like to investigate the possibilities and see if it would be realistic and workable for us. Would anyone be willing to work with me on researching Flipcause and any other possibilities that we can possible find?